

Otemachi・Marunouchi・Yurakucho Art Map

In the "OMY district" where large companies leading Japan's economy are gathered, highest level public art has been installed in various places representing the identity of office buildings in this global district. Art spots that may be missed when passing through the city have been shown on this map along with artwork descriptions by practitioners in the field.

*With this map, visitors may view artwork description videos by the 2D codes. *Please open this map to view both the corresponding numbers and titles of artworks.

20 Dai-ichi Life Gallery /
The first floor lobby of the Hibiya Head Office
At Dai-ichi Life, while offering special sponsorship for the "VOCA Exhibition", a contemporary art exhibition in support of young artists, we also collect some of the awarded artworks and display them in our gallery/lobby.

15 Tokyo Kaikan
Inokuma Genichiro
[City/Window]

16 YAU CENTER
Alternative space bringing forth co-creation between art, businesses and the city.

17 Kokusai Building
Usukubo Kaoru
["She is." Your Alter Ego Found Right Next to You]

18 CADAN YURAKUCHO
Exhibition space run by CADAN, an association of galleries leading the contemporary art scene in Japan. Member galleries exhibit their works in turn.

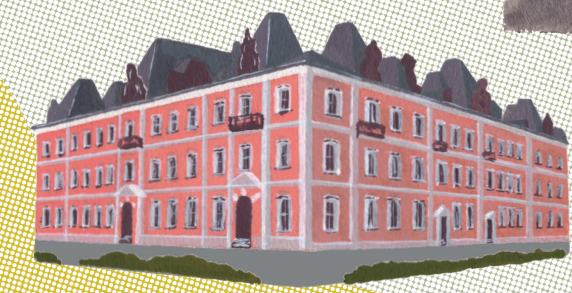
19 Idemitsu Museum of Arts

21 - 26 Marunouchi Bldg. Public Art Project
Works by 6 Japanese and overseas artists are displayed under the theme "interface between architecture and art".

In the event of the reconstruction of the nationally renowned Marunouchi Bldg., this public art project bringing architecture and art together was put into practice to create unseen new building space that adds color to the vibrant city. 6 selected artists from Italy, England, Ireland, and Japan display their works here.



- 21 Corban Walker [Scales]**
- 22 Shelagh Wakely [The Shadow of a Tree, Pattern of the Rain]**
- 23 Tsuchiya Kimio [MEMORY OF M]**
- 24 Giampaolo Babetto [In Finito]**
- 25 Susanna Heron [36 Elements: Glass Wall]**
- 26 Kawakami Kisa [Interactive Wave and Windows]**



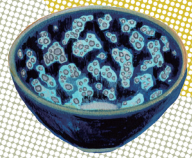
27 Mitsubishi Ichigokan Museum, Tokyo
Opened in 2010, the red-brick building is the restoration of The Mitsubishi Ichigokan constructed by MITSUBISHI & CO., LTD in 1894 (designed by British architect, Josiah Conder). The museum holds exhibitions 3 times a year with a focus on modern art from the late 19th to early 20th centuries.



28 Shin-Tokyo Bldg.
Yabashi Rokuro
[Sai-un, Ryu-sui]

29 GOOD DESIGN Marunouchi
A communication platform organized and managed by Japan Institute of Design Promotion that connects design with people and society.

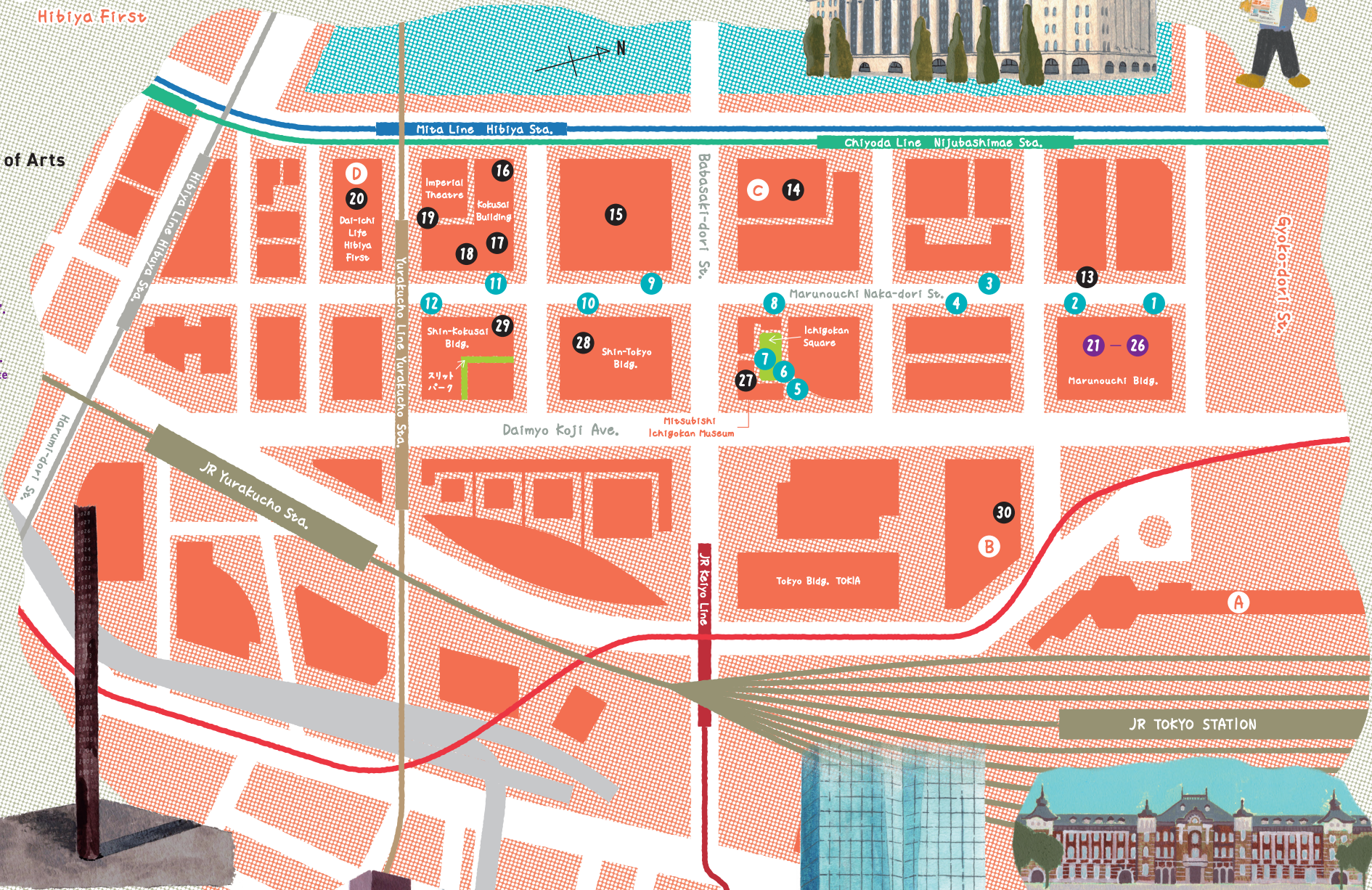
14 Seikado Bunko Art Museum
Visitors can enjoy Eastern antiques with ties to the Mitsubishi family, including National Treasures and Important Cultural Properties, within MEIJI SEIMEI KAN - an Important Cultural Property itself facing the Imperial Palace. The museum holds approximately 6,500 pieces from the father/son collection of Yanosuke & Koyata Iwasaki (Mitsubishi's second and fourth presidents).



Yohen Tenmoku tea bowl (Inaba Tenmoku) Seikado Bunko Art Museum

D Dai-ichi Life Hibiya First

C MEIJI SEIMEI KAN



1 - 12 MARUNOUCHI STREET GALLERY
A project held since 1972 in which MITSUBISHI ESTATE CO., LTD. and CHOKOKU-NO-MORI ART FOUNDATION exhibit modern sculptures and artworks by contemporary artists active in the global art scene mainly along the Marunouchi Naka-dori Street, alternating artworks once every few years, with an aim to create a city rich in artistic expression.
*Some of the works are scheduled to be replaced.

- 1 Pavel Krbálek [Nike 1989]**
- 2 Nawa Kohei [Trans-Double Yana [Mirror]]**
- 3 Funakoshi Katsura [I fly above the city]**
- 4 H&P. Chaguin [Matching Thoughts]**
- 5 Agustín Cárdenas [Water Unfolding]**
- 6 Bernard Meadows [The Lovers]**
- 7 Henry Moore [Working Model for Sheep Piece]**
- 8 Sumikawa Kiichi [Mask of White]**
- 9 Kusama Yayoi [I am a pumpkin]**
- 10 Nakatani Michiko [A Girl Who Carries a Small Fish Carefully and a Blue Bird Flying in Your Golden Sky]**
- 11 Jim Dine [The Lookout Tower]**
- 12 Kim Hamisky [Renaissance]**



MARUNOUCHI STREET GALLERY Special Website



13 Mitsubishi Shoji Bldg.
Yasuda Kan [TENKŪ]

30 JP Tower Museum INTERMEDIATHEQUE
A public institution jointly managed by Japan Post Co., Ltd. and The University Museum, The University of Tokyo that can be enjoyed for free. One of the highlights of exhibitions held at "INTERMEDIATHEQUE" is the design techniques used to recreate subjects from historical heritage within contemporary urban space.

Tokyo Biennale 2025: An International Art Festival Originating in Local Areas of Tokyo Pre-Action

Organized by General Incorporated Association Tokyo Biennale / Sponsor: Mitsubishi Estate Co., Ltd., Mitsui Fudosan Co., Ltd. / Corporate Partner: TOKYO DOME CORPORATION / Special cooperation: TOHO-LEO Co., Nihonbashi Muromachi Area Management, Hanazono Alley | Room 101 / Cooperation: Tokyo University of the Arts, East Japan Railway Company, OMY Landlord's Council, OMY Area Management Association, Toei Kan'e-ji Temple / Subsidy: Japan Arts Council / Agency for Cultural Affairs, Government of Japan
Inquiry | General Non-Profit Incorporated Organization Tokyo Biennale | Etoile Kaito Product Department Building 5F, 1-13-3 Higashikanda, Chiyoda-ku, Tokyo 101-0031
TEL: 03-5809-1653 FAX: 03-5809-1659 Email info@tokyobiennale.jp https://tokyobiennale.jp/



41 The Museum of the Imperial Collections, Sannomaru Shozokan

Explanatory Video



45 Otemachi Building "Sky Lab" Hirakushi Denchū [Otemachi Kannon]

In 1967, a Kannon Bodhisatva was offered to the rooftop in prayer for the health and prosperity of the Otemachi Bldg. and its tenants. It was created by Hirakushi Denchū, a sculptor representative of Modern Japan. It took him nearly 5 years to complete the work.

Otemachi Building "Sky Lab" Access to the rooftop requires registering for the "Marunouchi Point App". It may be closed due to rainy weather, strong winds, or operational circumstances.

46-51 MARUNOUCHI STREET GALLERY

A project held since 1972 in which MITSUBISHI ESTATE CO., LTD. and CHOKOKU-NO-MORI ART FOUNDATION exhibit modern sculptures and artworks by contemporary artists active in the global art scene mainly along the Marunouchi Naka-dori Street, alternating artworks once every few years, with an aim to create a city rich in artistic expression.

*Some of the works are scheduled to be replaced.

46 Matsuo Takahiro [Prism "Dahlia + Peony"]

47 Renate Hoflitz [Convex]

48 Luigi Mainolfi [Giant City]

49 Giuseppe Spagnolo [Untitled]

50 Timo Sotin [Sunbather]

51 Igor Mitoraj [Sleeping Head]

52 Misawa Atsuhiko [Animal 2017-01-B2]



MARUNOUCHI STREET GALLERY Special Website

53 Tokyo Station Gallery



A Tokyo Station Marunouchi Building

What is "OMY district"?

"OMY" is a collective abbreviation using the first characters of "Otemachi", "Marunouchi", and "Yurakucho", areas comprised by approximately 120 ha of business districts representing Japan. Though the area developed specializing in business, it has changed into a vibrant place that people want to visit even on weekends. The art pieces that stand in between timeless architecture and museums, as well as office buildings, are the fun colors of the city waiting to be discovered by visitors walking by.

45 Otemachi Kannon



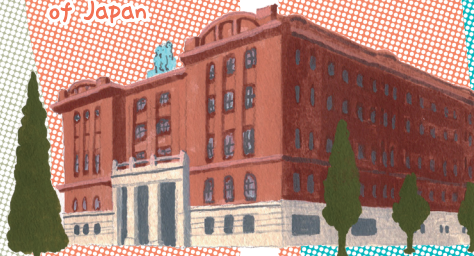
the East Gardens of the Imperial Palace

44



31

E The Industry Club of Japan



Goto-dori St.

Tokyo Marine Headquarters Building (under construction)

Marunouchi Naka-dori St.

SKIn-Marunouchi Bldg.

Marunouchi Terrace

Marunouchi Oazo

TOKYO TORCH

Hibiya-dori St.

Marunouchi Line Otemachi Sta.

Marunouchi Line Otemachi Sta.

Mita Line Otemachi Sta.

Chiyoda Line Otemachi Sta.

Marunouchi Line Tokyo Sta.

JR TOKYO STATION

36 L'In Noir

Otemachi PLACE

42 SUN DIAL

31 Marubeni Gallery (Marubeni Tokyo Head Office)

Curated exhibitions are held centered on the collection owned by Marubeni. (Permanent exhibitions are not held here) Please see the gallery's website for opening hours.

Explanatory Video



32 Otemachi Park Building Tokoro Asao [TOWER OF CONNECT]

33-44 Otemachi Financial City

Artworks created by internationally acclaimed artists await visitors at this building. The works produced using a variety of materials including metal, stone, cement, glass, fabric, and ceramics bring forth a new space.

Explanatory Video



Grand Cube

33 Richard Deacon [Grove]

34 Daniel Buren [À partir de la grande porte, tout le parvis: travail in situ Tokyo 2015/2016]

Otemachi Financial City Art Special Website



35 Kaneko Jun [Current, Color Box, Flux, Bloom]

*This artwork includes multiple pieces. *Currently due to construction, the piece titled "Color Box" cannot be viewed.

36 Jean Michel Othoniel [L'In Noir]

The North Tower & the South Tower

37 Kate Thomson [Keys of Affinity]

*This artwork is made up of multiple works located on the ground within the same vicinity.

38 Nishikawa Katsuhito [Spiritual Wall with Certain Surface]

34 À partir de la grande porte, tout le parvis: travail in situ Tokyo 2015/2016



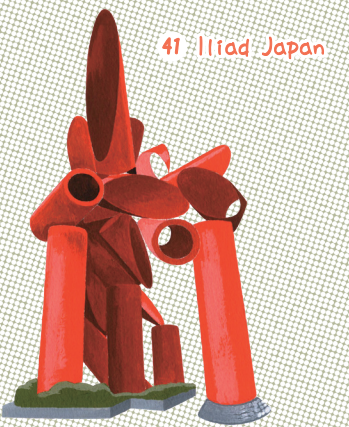
39 Otemachi Naka-dori St. Kawabata Greenway Temporary wall Ikeda Masanori [Towns Connected by Photography - Otemachi, Kanda]

40 The Yomiuri Shimibun Building Yokoyama Taikan [Sacred Mt. Fuji]

41 Tokyo Sankei Building Alexander Liberman [Iliad Japan]

42 Otemachi PLACE Sugimoto Hiroshi [SUN DIAL]

43 Otemachi PLACE Nishino Kozo [Spanning Space]



41 Iliad Japan